

# PES Spray



HB-5000



X-402



X-102

Superior Quality  
Products & Project  
Management Services

PARTNERED WITH



**ASAHI  
SUNAC**

## MEDIUM PRESSURE & LOW PRESSURE

### X-102



Gravity



Suction



Pressure

**Application:**

Light industry, Automotive, WoodWork, Metal, Furniture, Small to middle work area.

Model	Type of Feed	Nozzle orifice Ømm (in)	Air cap	Atomizing Air pressure Mpa (bar)	Fluid Output ml/min	Air consumption l/min (cfm)	Pattern Width mm (in)	Weight g(lbs)
X-102-08P	Pressure	0.8 (0.031)	E2P	0.29 (3.0)	150	270 (9.5)	190 (7.5)	325 (0.71)
X-102-10P		1.0 (0.039)			200		220 (8.7)	
X-102-13P		1.3 (0.051)		0.24 (2.5)	200	220 (7.8)	210 (8.3)	
X-102-15P		1.5 (0.059)			250		240 (9.4)	
X-102-10S	Suction	1.0 (0.039)	E1	0.24 (2.5)	85	75 (2.6)	120 (4.7)	
X-102-13S		1.3 (0.051)	K1		150	145 (5.1)	155 (6.1)	
X-102-13S		1.3 (0.051)	H2		150	225 (7.9)	160 (6.3)	
X-102-13S		1.3 (0.051)	H4		145	250 (8.8)	200 (7.8)	
X-102-15S		1.5 (0.059)	K1		175	145 (5.1)	170 (6.7)	
X-102-15S		1.5 (0.059)	H2		170	225 (7.9)	175 (6.9)	
X-102-18S		1.8 (0.071)	N1		210	170 (6.0)	170 (6.7)	
X-102-10G		Gravity	1.0 (0.039)		E1	95	75 (2.6)	
X-102-13G	1.3 (0.051)		K1	160	145 (5.1)	170 (6.7)		
X-102-13G	1.3 (0.051)		H2	160	225 (7.9)	175 (6.9)		
X-102-13G	1.3 (0.051)		H4	170	250 (8.8)	220 (8.7)		
X-102-15G	1.5 (0.059)		K1	200	145 (5.1)	180 (7.0)		
X-102-15G	1.5 (0.059)		H2	190	225 (7.9)	190 (7.5)		
X-102-18G	1.8 (0.071)		N1	240	170 (6.0)	190 (7.5)		

- X-102 Spray Distance: 200mm  
Fluid connector: ¼ PF;

\*Paint viscosity: 16sec/Ford #4  
Air connector: ¼ PF

## MEDIUM PRESSURE & LOW PRESSURE

### X-202



### X-202L



### Application:

Automotive, WoodWork, Metal, Furniture, medium viscosity. Large work area.

Model	Type of Feed	Nozzle orifice Ømm (in)	Air cap	Atomizing Air pressure Mpa (bar)	Fluid Output ml/min	Air consumption l/min (cfm)	Pattern Width mm (in)	Weight g(lbs)
X-202-12P	Pressure	1.2 (0.047)	G2P	0.29 (3.0)	500	560 (19.8)	400 (15.7)	375 (0.81)
X-202-15S	Suction	1.5 (0.059)	K1		240	200 (7.1)	210 (8.3)	
X-202-15S		1.5 (0.059)	K2		240	330 (11.7)	290 (11.4)	
X-202-18S		1.8 (0.071)	K2		290	330 (11.7)	340 (13.4)	
X-202-20S		2.0 (0.079)	R1		350	260 (9.2)	260 (10.2)	
X-202-20S		2.0 (0.079)	R2		350	360 (12.7)	290 (11.4)	
X-202-25S		2.5 (0.098)	W1		440	360 (12.7)	280 (11.0)	
X-202-15G		Gravity	1.5 (0.059)		K1	270	200 (7.1)	
X-202-15G	1.5 (0.059)		K2		270	330 (11.7)	320 (12.6)	
X-202-20G	2.0 (0.071)		R1		410	260 (9.2)	280 (11.0)	
X-202-20G	2.0 (0.071)		R2		410	360 (12.7)	320 (12.6)	
X-202-25G	2.5 (0.098)		W1		510	360 (12.7)	310 (12.2)	

- X-202 Spray Distance: 200mm
- X-202L Fluid connector: 3/8 PF;

\*Paint viscosity: 16sec/Ford #4  
Air connector: 1/4 PF

## MEDIUM PRESSURE & LOW PRESSURE

**X-402**



Central Gravity

**X-402L**



Central Gravity

**Application:**

Automotive paint, Clear or Base paint, Mid-high or high viscosity paint.

Model	Type of Feed	Nozzle orifice Ømm (in)	Air cap	Atomizing Air pressure Mpa (bar)	Fluid Output ml/min	Air consumption l/min (cfm)	Pattern Width mm (in)	Weight g(lbs)
X-402-12G	Central gravity	1.2 (0.047)	LV2	0.29 (3.0)	160	370 (13.1)	250 (9.8)	370 (0.81)
X-402-13G		1.3 (0.051)			200		300 (11.8)	
X-402-14G		1.4 (0.055)			265		320 (12.6)	
X-402-16G		1.6 (0.063)			310		340 (13.4)	
X-402-18G		1.8 (0.071)	LV1		400	380 (13.4)	320 (12.6)	
X-402-25G		2.5 (0.098)	W1		580	360 (12.7)	340 (13.4)	

HVLP Model	Type of Feed	Nozzle orifice Ømm (in)	Air cap	Atomizing Air pressure Mpa (bar)	Fluid Output ml/min	Air consumption l/min (cfm)	Pattern Width mm (in)	Weight g(lbs)
X-402L-14G	Central gravity	1.4 (0.055)	LV4	0.11 (1.1)	130	270 (9.5)	290 (11.4)	370 (0.81)
X-402L-16G		1.6 (0.063)			150		300 (11.8)	

- X-402 Spray Distance: 250mm
- X-402L Spray Distance: 200mm

\*Paint viscosity: 16sec/Ford #4  
 Fluid connector: M16×1.5;

Air connector: 1/4PF

## LOW PRESSURE AIR SPRAY AUTOMATIC GUN PEARL GUN

**AGB50**



**AGB51**



### Pearl Gun AGB50 & AGB51

The suitable automatic gun for low pressure spray and high brightness\*pearl squid!

#### Features

- High transfer efficiency is available for paint saving without wasting and shorten the operation time and it contribute to large cost down.
- The combination of a new discover nozzle and an air cap, it is superior finish performance with low pressure air.
- By reviewing needle\*seat mechanism, high durability for ON/OFF are gained and it contribute to reduce running cost.
- By 30% reduction for minimizing and saving weight compared with a conventional equipment it is easy to attach plural numbers of guns towards a robot.

#### Purpose

- Electrical machinery/mobile phone, IT equipment, consumer electronics.
- Vehicles/automobile parts, plastic mold parts.

#### Specification

Maximum flow rate	200mL/min
Minimum flow rate	20mL/min
Maximum air consumption	350mL/min
Maximum atomization pattern width	150mm
Dimension	44×91×110mm
Weight	430g

#### Introduction Effect

- Improvement for transfer efficiency.
- Improvement for film coating quality.
- VOC-CO2 reduction.

## AIR ELECTROSTATIC HAND GUN HB SERIES

**HB5000**



**HB6000**



Model	HB5000 S/ M/ W	HB6000
Charging system	Direct charging system	Indirect charging system
Applied voltage	Max – 60kV	Max – 30kV
Overall length (includes nozzle and air cap)	212mm	200mm
Weight (includes nozzle and air cap)	540g	520g
Associated air cap	HN400 (Small pattern) HN600 (Medium pattern) HN800 (Large pattern)	
Paint nozzle diameter	Ø 1.1mm / Ø 1.6mm	
Associated controller	BPS130: singular number available BSP1600: plural number available	
Adaptation paint	Solvent (Solid metallic)	Water borne (Solid metallic)

- Water-borne paint can be used in HB500W by isolating a paint supply system.

**PNEUMATIC DIAPHRAGM PUMP  
PD SERIES  
MODEL PD40 . PD40L . PD40S . PD40SW . PD160**

**PD-40**



Model	PD40 (Standard)	PD40L (Fine flushing type)	PD40S (Stainless type)	PD40SW (Stainless, enlarged pressure type)	Pd160
Pressure ratio	1 : 1			1 : 2	1 : 1
Max paint flow rate *1	20L/min	10L/min	20L/min	15L/min	60L/min
Max air pressure	0.7 Mpa			1.0Mpa	0.7Mpa
Max paint pressure	0.7 Mpa (Pump outlet)			1.0Mpa	0.7Mpa
Max fluid temperature	60°C				
Air inlet bore	G1/4 (PF ¼)				G1/2 (PF ½)
Paint outlet bore	Rc3/8 (PT3/8)		G3/8 (PF3/8)		Rc3/4 (PT3/4)
	Low pressure regulator outlet bore G1/4 (PF1/4)		Low pressure regulator outlet bore G3/8 (PF3/8)		-
Dimensions (W×D×H)	470×540×690 (mm)			470×650×690 (mm)	340×530×620 (mm)
Weight	8.5kg		13.5kg	15.0kg	16.0kg

\* 1 Fluid: Water, Pump

## HIGH PERFORMANCE PLUNGER TYPE AIRLESS PUMP BEAR SERIES

**MODEL SP1021 . SP1628 . SP1636 . SP1844 . SP1854(Z) . SP1878 . SP2544 . SP2554(Z)**

### Bear Pump – SP1844



### Bear Series – Specification

The values inside the ( ) are SUS specification.

Name	MINI BEAR	LIGHT BEAR		BIG BEAR		
Model	SP1021	SP1628 (S)	SP1636 (S)	SP1844 (S)	SP1854 (S)	SP187 (S)
Part No.	40338-9	40344-7 (40378-4)	40344-6 (40378-5)	40353 (40374)	40353-1 (40374-1)	40353-2 (40374-2)
Pressure ratio	1 : 23	1 : 30	1 : 20	1 : 30	1 : 20	1 : 10
Regular delivery	1.3 l/min	2.2 l/min	3.2 l/min	4 l/min	6 l/min	8 l/min
	(Max 4l/min)	(Max 6.8 l/min)	(Max 10 l/min)	(Max 14 l/min)	(Max 20 l/min)	(Max 30 l/min)
Delivery (Max)	11.5Mpa	15Mpa	10Mpa	15Mpa	10Mpa	5Mpa
Dimensions (WxDxH)	320x400x750mm	350x500x900mm		600x720x1,280mm		
Weight	14kg	32kg	33kg	80kg	85kg	90kg
Compressor	Continuous 1 PS Intermittent 0.5PS	Continuous 2PS/ Intermittent 1PS		Continuous 5PS/ Intermittent 3PS		

Name	SUPER BEAR			ZINC	
Model	SP2544 (S)	SP2554 (S)	SP2578 (S)	SP1854Z	SP2554Z
Part No.	40381-3 (40382-3)	40342 (40379-7)	40342-1 (40379-8)	40330-4	40329-3
Pressure ratio	1 : 65	1 : 45	1 : 20	1 : 20	1 : 45
Regular delivery	4 l/min	6 l/min	8 l/min	6l/min	
	(Max 14l/min)	(Max 20 l/min)	(Max 30 l/min)	(Max 20l/min)	
Delivery (Max)	32.5Mpa	22.5Mpa	10Mpa	10Mpa	22.5Mpa
Dimensions (WxDxH)	600x720x1280mm				
Weight	105kg	110kg	115kg	85kg	110kg
Compressor	Continuous 7.5PS / Intermittent 5PS			Continuous 5PS/ Intermittent 3PS	Continuous 7.5PS/ Intermittent 5PS



## MICRO COAT AIR SPRAY GUN HAND PEARL GUN

**MGB-50**



### Hand Pearl Gun MGB50

High transfer efficiency and superior control ability are compatible with an air spray gun.

### Features

- Superior finishing performance by a new discovery of high accuracy nozzle, film coating quality by inner pressure loss reduction effect and transfer efficiency are significantly improved.
- By through lightweight and the center of gravity based on balance engineering, handling ability is significantly improved.
- Maintenance ability is significantly improved by state recognition for safety ensure and module structure.

### Purpose

- Vehicles: automobile body, automobile bumper, automobile parts, plastic mold parts.
- Electrical machinery: switchboard, control panel, air conditioner, office automation equipment, consumer electronics.
- Building material furniture: business equipment, steel furniture, metal-frame for window fence, building board.
- Machinery: construction machinery, machine tool, industrial machinery.
- Others: metal product, plating product, wood product etc.

### Specification

Maximum liquid pressure	0.6 Mpa
Maximum air pressure	0.6 Mpa
Operating environment	Temperature 5~40°C, Humidity 40~80%
Overall length	174 mm
Weight	420g

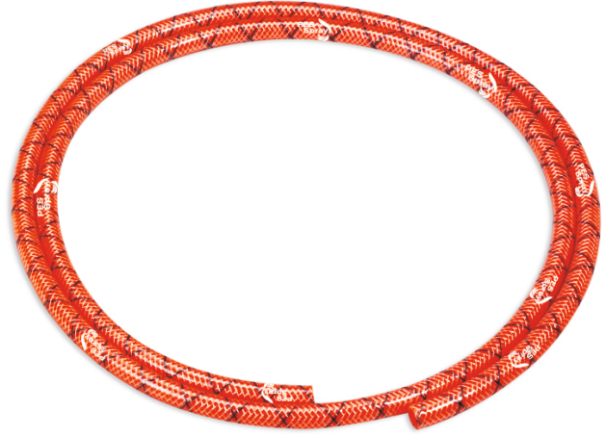
**AGITATOR FA-3S**



**FA-3S Air Agitator**

L: 82mm W: 82mm H: 440mm  
Net WT: 1.1kg  
CUFT: 0.13

**AIR HOSE 6.5\*10 & 8\*12**



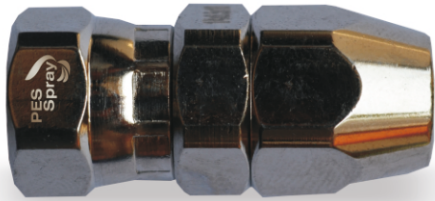
**PAINT HOSE 6.5\*10**



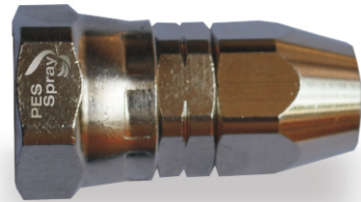
**TWIN HOSE 6.5\*10**



**Fluid Hose Quick Coupler**



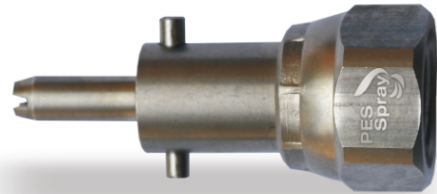
Coupler 1/4 - 8\*12 Pipe



Coupler 1/4 - 6.5\*10 Pipe  
Coupler 3/8 - 6.5\*10 Pipe



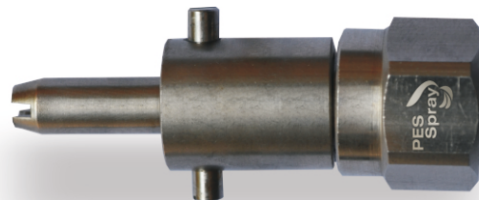
RSQ-3  
3/8SM



RPQ-3  
3/8PF



RSQ-2  
1/4SM



RPQ-2  
1/4PF



## **PES SPRAY TECH PVT. LTD.**

736-D , PACE CITY -II , SECTOR 37 , GURGAON , HARYANA – 122002 (INDIA)

TEL: +91 9810354095 , 9910106841

EMAIL : [riaz@pesspray.com](mailto:riaz@pesspray.com) , [aquib@pesspray.com](mailto:aquib@pesspray.com) , [sales@pesspray.com](mailto:sales@pesspray.com)

[www.pesspray.com](http://www.pesspray.com)